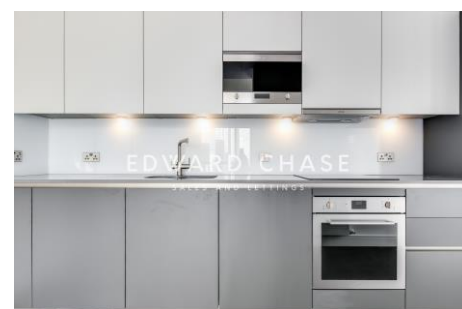


Maine Tower 9 Harbour Way E14 9DX

Edward Chase estate agents present Maine Tower, Canary Wharf, E14. This icon building is amongst some of the most stylish and sought after apartments in Canary Wharf offering luxurious living accommodation. This apartment will appeal to professionals searching for style, comfort and convenience. Positioned in the heart of Canary Wharf this apartment has several key features such as: - Amazing views of Canary Wharf - Two double bedrooms - Two bathrooms - Integrated appliances & white goods - Dishwasher - Open air balcony - Large floor to ceiling bay windows - No gas - Private underground parking (additional charge) - Private gym - Concierge service - Fibre optic broadband - Television in bathroom - High specification - Sound proofed - Rented furnished or unfurnished - Built in television stand - Bedrooms have fitted wardrobes Please contact Edward Chase today to register your interest. Lettings Edward Chase estate agents offer a bespoke, professional, ARLA accredited Lettings & Management service.



- Brand New Luxury Apartment Building In Canary Wharf
- Private Underground Parking Available At Additional Charge
- High Level Finish With Integrated Appliance, Floor To Ceiling Windows, Television Built into Master Bathroom
- Amazing 2 Double Bedroom Apartment With Breathtaking Views Of Canary Wharf
- Located In The Heart Of The Financial District With Several Amenities To Choose From
- Maine Tower Has A Private Gym (Additional Charge) & a 24hr Concierge

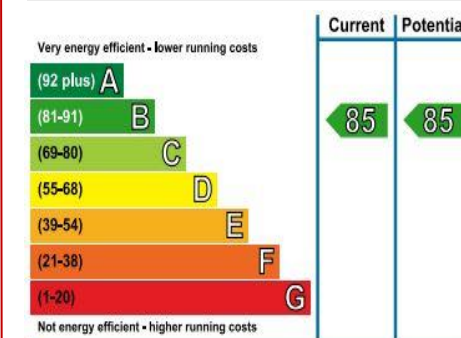
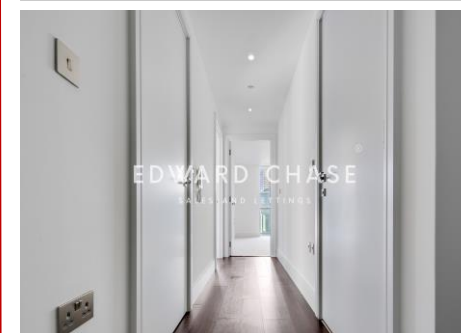
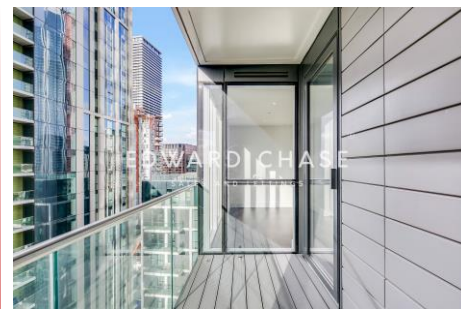
Monthly Rental Of £2,499

Maine Tower 9 Harbour Way E14 9DX

Monthly Rental Of £2,499

Edward Chase estate agents present Maine Tower, Canary Wharf, E14. This icon building is amongst some of the most stylish and sought after apartments in Canary Wharf offering luxurious living accommodation. This apartment will appeal to professionals searching for style, comfort and convenience. Positioned in the heart of Canary Wharf this apartment has several key features such as: - Amazing views of Canary Wharf - Two double bedrooms - Two bathrooms - Integrated appliances & white goods - Dishwasher - Open air balcony - Large floor to ceiling bay windows - No gas - Private underground parking (additional charge) - Private gym - Concierge service - Fibre optic broadband - Television in bathroom - High specification - Sound proofed - Rented furnished or unfurnished - Built in television stand - Bedrooms have fitted wardrobes Please contact Edward Chase today to register your interest. Lettings Edward Chase estate agents offer a bespoke, professional, ARLA accredited

Lettings & Management service. If you would like a free property appraisal to gauge the rental potential of your property or you are considering a buy to let purchase, please feel free to contact Sukhbir Basra, Branch Manager to arrange an appointment. Edward Chase estate agents specialize in Ilford, Redbridge, Seven Kings, Goodmayes, Chadwell Heath, Newbury Park, Barkingside, Chadwell Heath, Barking, Canary Wharf, Romford, Dagenham, Newham, Royal Wharf and the surrounding East London vicinity.



MONEY LAUNDERING REGULATIONS 2003

Intending purchasers will be asked to produce identification and proof of financial status when an offer is received. We would ask for your co-operation in order that there will be no delay in agreeing the sale.